

Preferential



19a Birchgrove Road BALMAIN NSW

3 2

This is Balmain with a sharper edge - a home that's been thoughtfully renovated and intelligently extended to create more space where it counts.

Type : House
Land Size : 265 sqm
View : <https://www.preferential.com.au/8675984>

Here's why this home stands out:

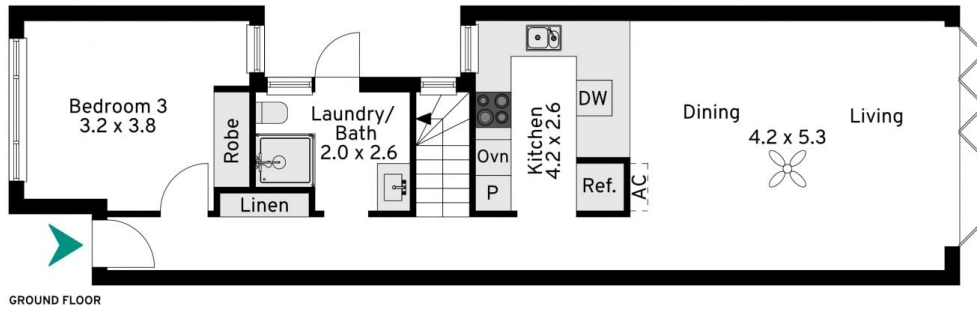
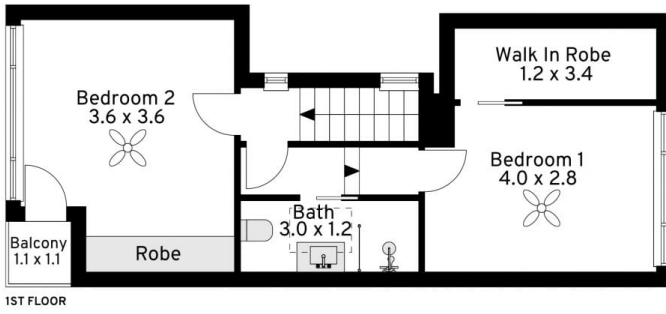
- *Set over two generous levels
- *Downstairs is all about connection. Living and dining come together as one large open, easy space, framed by full-height bi-fold glass doors that draw the garden straight into the home
- *Well-appointed renovated kitchen with generous bench space, dishwasher and gas cooking
- *A brand new, design-led main bathroom finished in statement tiling



Kate Lorden
0407 435 903

[For full version visit the website](https://www.preferential.com.au)

<https://www.preferential.com.au>



19A Birchgrove Road, Balmain

The site plan and floor plan are not to scale; measurements are indicative and in metres. Bushes and trees are placed for illustration purposes. Plans should not be relied on. Interested parties should make and rely on their own enquiries.

Produced by DIAKRIT