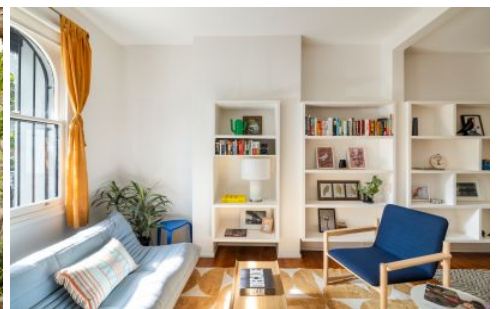


Preferential



46 Malcolm Street ERSKINEVILLE NSW

3  2  1 

This is one of those terraces that just works; clever, character-filled and effortlessly cool, spread across three generous levels and designed for real inner-city living

Type : House
Land Size : 111.56 sqm
View : <https://www.preferential.com.au/8587941>

Here's why this home stands out:

* Large, inviting lounge and dining zone with polished timber boards and a wall of shelving for all those books and knick knacks

*Renovated kitchen that knows exactly what it's doing, with polished concrete floors, gas cooking, a dishwasher, plenty of bench space and an island bench for everyday meals or entertaining without the fuss

*From the family room the home opens out to a deck and private garden - a genuine outdoor extension that's perfect



Kate Lorden
0407 435 903

[For full version visit the website](https://www.preferential.com.au)

<https://www.preferential.com.au>