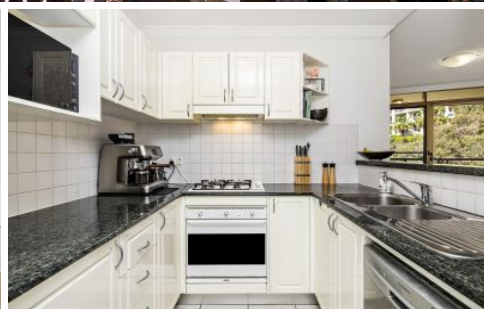


# Preferential



**308/13 Warayama Place ROZELLE NSW**

2  2  1 

Welcome to your private oasis in the heart of Balmain Shores. This oversized 2-bedroom apartment is your front-row seat to leafy Bridgewater Park and sparkling water views, all from a sun-drenched, north-east facing balcony. Whether you're working from home, entertaining friends, or just soaking up the view, this light-filled home ticks every box.

Here's why this home stands out:

\*Spacious open-plan living flowing to a large covered balcony with park & water views

\*Stylish granite kitchen with gas cooking, dishwasher and pantry

**Type** : Unit

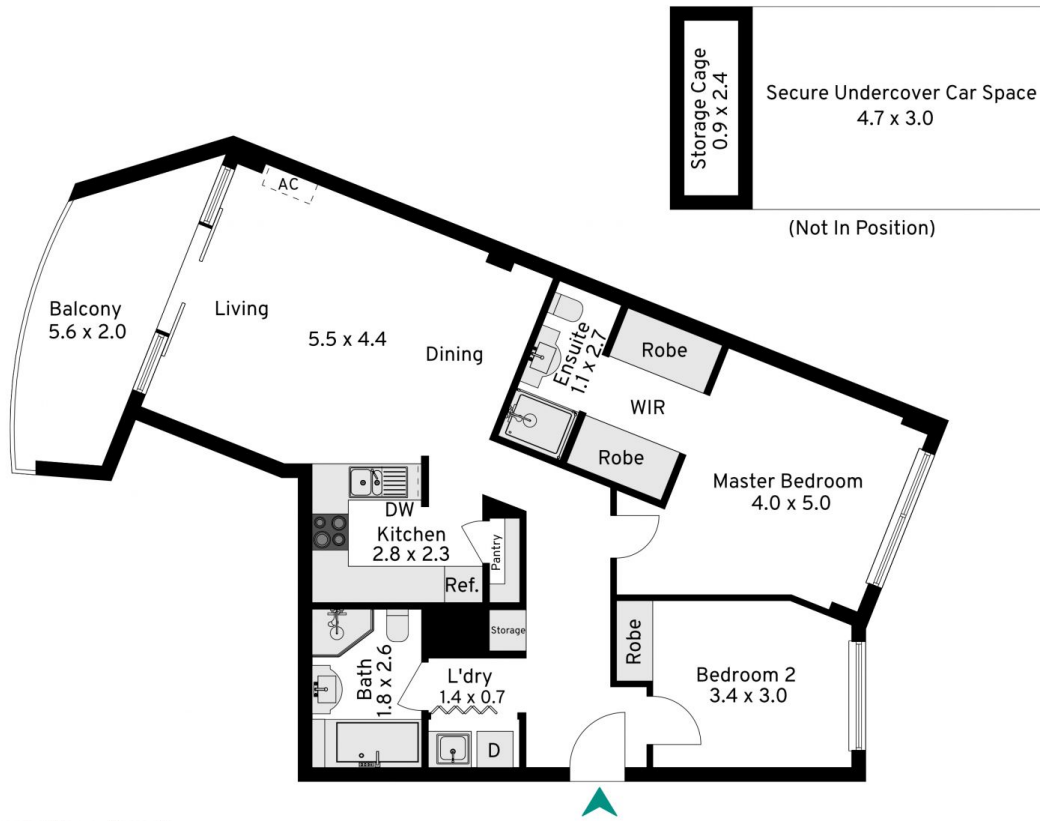
**View** : <https://www.preferential.com.au/8526508>



**Kate Lorden**  
0407 435 903

[For full version visit the website](https://www.preferential.com.au)

<https://www.preferential.com.au>



**308/13 Warayama Place, Rozelle**

The floorplan is not to scale; measurements are indicative and in metres. Exterior elements are not in position. Plans should not be relied on. Interested parties should make and rely on their own enquiries.

Produced by **DIAKRIT**