

Preferential



38a Lawson Street BALMAIN NSW

3 2 1

Here's why this home stands out:

*The lounge opens through glass sliding doors to a sunny front porch

*Open-plan eat-in kitchen with breakfast bar, lots of bench space, storage and dishwasher and more than enough room for a dining table

*Two bathrooms (one on each floor) One completely renovated and the other in neat condition with a bathtub and laundry facilities

* Three generously sized bedrooms. The master enjoys its own private balcony, two bedrooms come with wardrobes.

Type : House
Building Size : 204 sqm
Land Size : 204 sqm
View : <https://www.preferential.com.au/8269022>



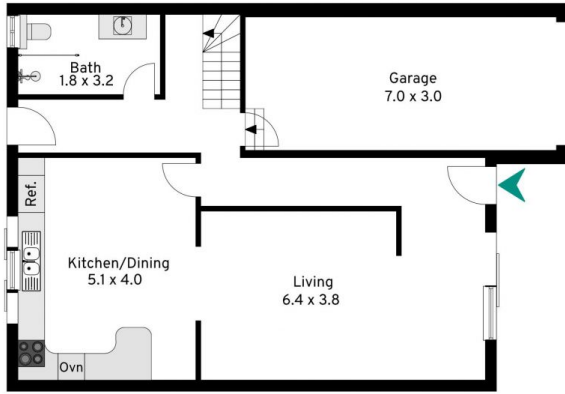
Kate Lorden
0407 435 903

[For full version visit the website](https://www.preferential.com.au)

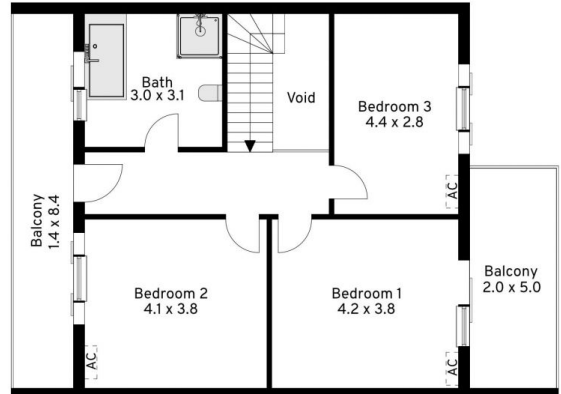
<https://www.preferential.com.au>



SITE PLAN



GROUND FLOOR



1ST FLOOR

38A Lawson Street, Balmain

The site plan and floor plan are not to scale; measurements are indicative and in metres. Bushes and trees are placed for illustration purposes. Plans should not be relied on. Interested parties should make and rely on their own enquiries.